

Faali behii.

Faali beɲii.

(Le paludisme)

Texte traduit et adapté d'un canevas
par l'Equipe Nawdm

Nawdm Neerm n m Nɔngan Kɛna Kpaturu
Association pour la Sauvegarde et le Développement
du Nawdm (A.S.D.N.), B.P. 3, Niamtougou

en collaboration avec

Action Santé pour Baga (ASB)
(Centre de Santé)

1er trimestre 2004

Titre en français : Le paludisme

Traduit/adapté par l'Equipe Nawdm

Texte original : Olive Shell

Illustrations : MBANJE Bawe Ernest

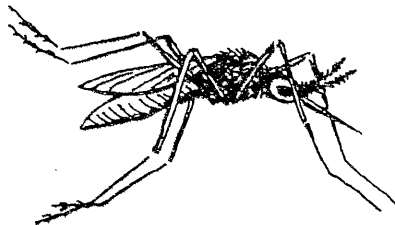
Texte original © SIL 1994

Faali befi.

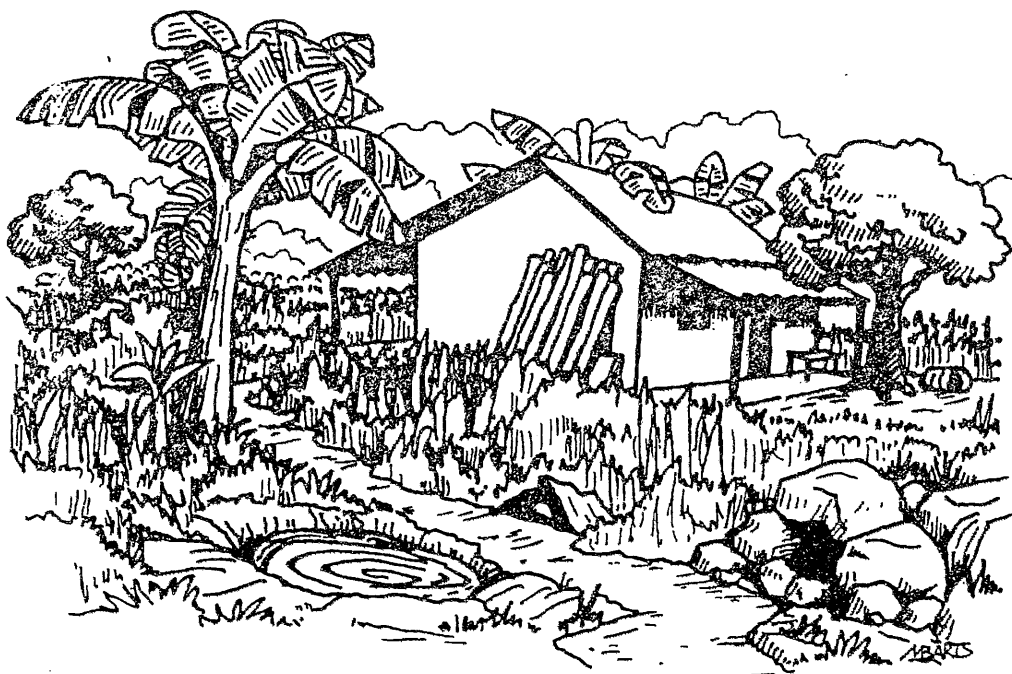
Baaben tia miil na faali ba na befi befi hiihin hi kuu nidba kod Toogo tantn bind wo bind. Bukai kod jul kunyɔɔɔ blaɔb kaa na hi gbanu kpafi n gemmnt n welee befi jugun. Ka sug na t` di faali befi jugu nii, l` gbaama na t` miim hi gwɛɛt.

ɔ Ben safi faali befi ?

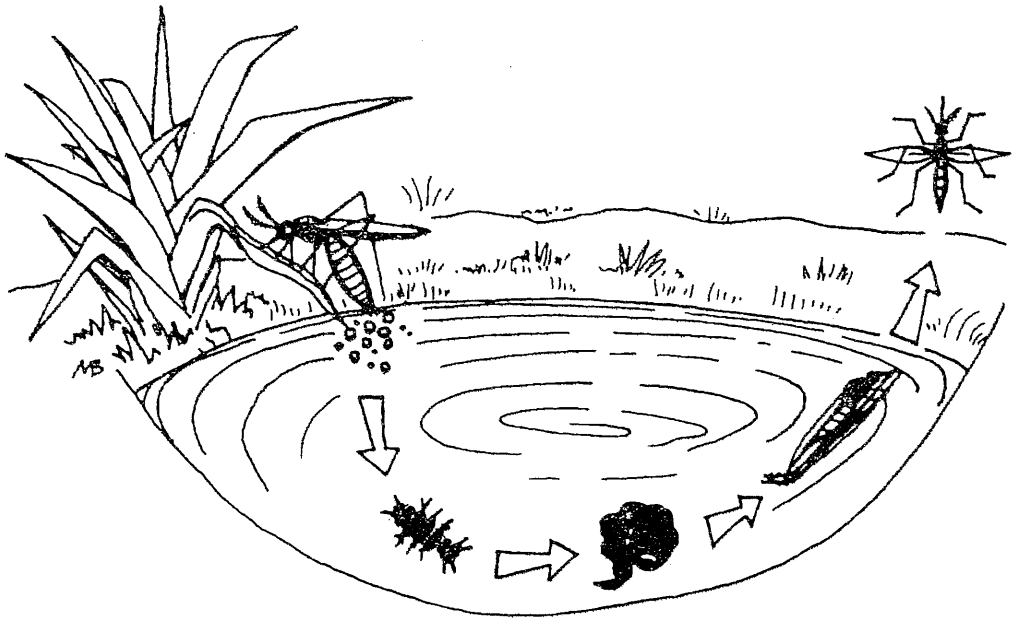
Dumii safi faali befi.



Hí gool kaalai tulgu n nigiigu tagh ba ree n nan nyaaltagt kpama l' bafir n na hì nyɔfɪl hì kɔɔlea nyaalmii fiɛn. Saɲ na hí nyaɲ kɔɔlea, l' ba na hì nyi jiim. Tii nnii hin ror nyingu ka nyaɲ nidba ka nyi bá jiim. Toɲu nn kee kù ragdgm lee, hí fofnt nyeet kan ba ree laa ka moot nyɔfɪr n haarii hì ta fofnt kan laa ta dugun jarii kaa laa sikɲan.

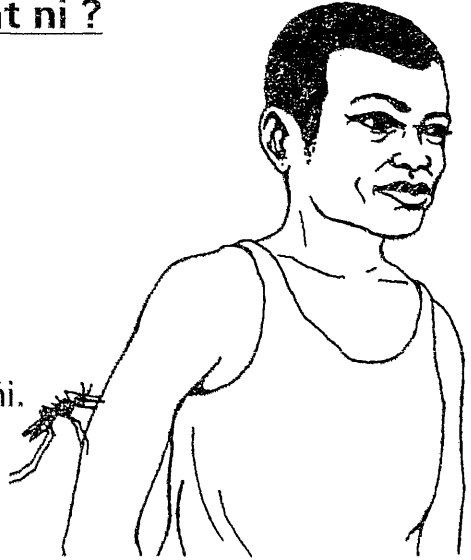


Koolea hin nyoh fee nan foda goora
halanha n ha kaann gmingminii, hii da hi bidg
duumbermii hi san hi momhi jilm baqb hi
gmegtgn hi ta nyah koolea.

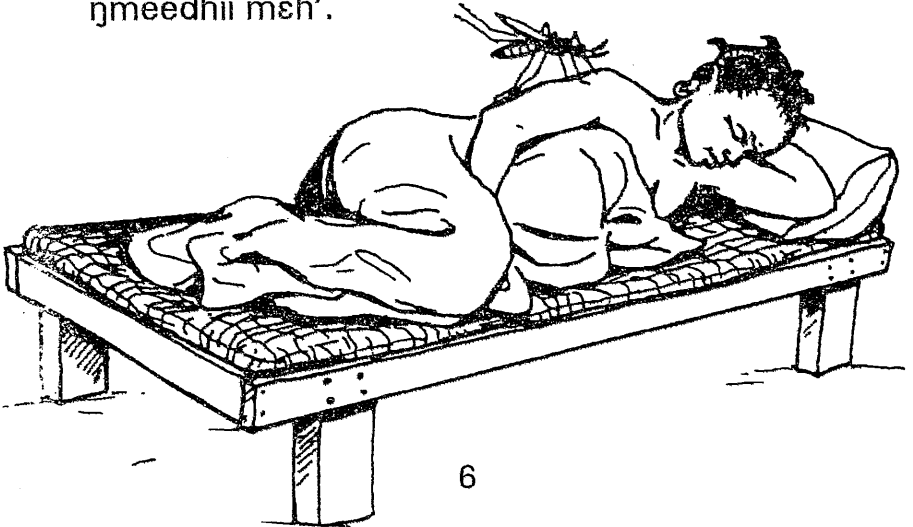


¿ Lan nnii dumga nn jibla
faali befihi t` namt ni ?

Goor diir
dumga da nyaŋidg
Bamela fià ban
gbanun lameŋgu.
Hà jiiimn kpaŋ faali
ŋmeedfi. Kà nyira
há jiiim gwentaŋi kà
ba ree faali ŋmeedfi.
Ŋmeedfii ba na bii
befiŋn.

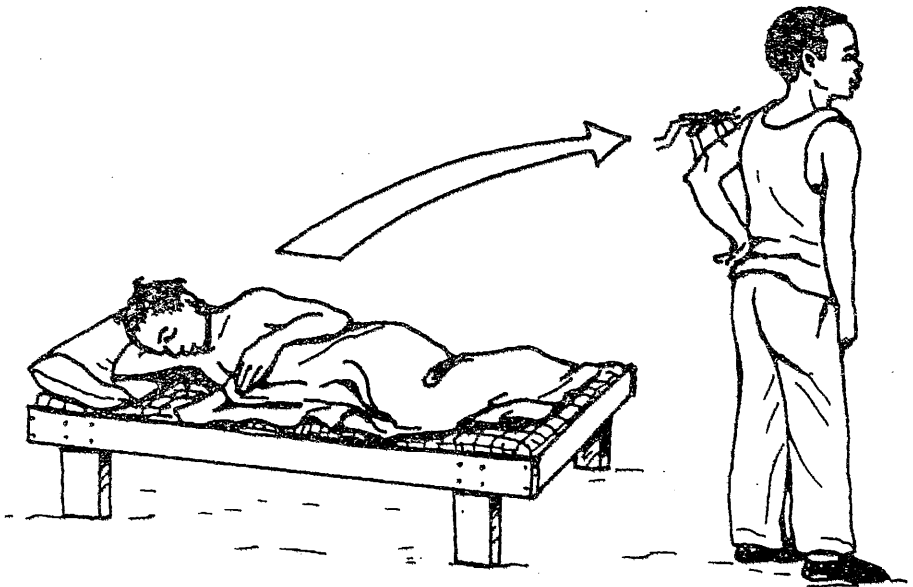


Gwelŋa Jibthena goor taann. Jibthena
ban faali. Hà jiiimn ba faali ŋmeedfii kod.
Dumga t nyaŋid-wu n nyim há jiiim n lag n
ŋmeedfii mefi'.



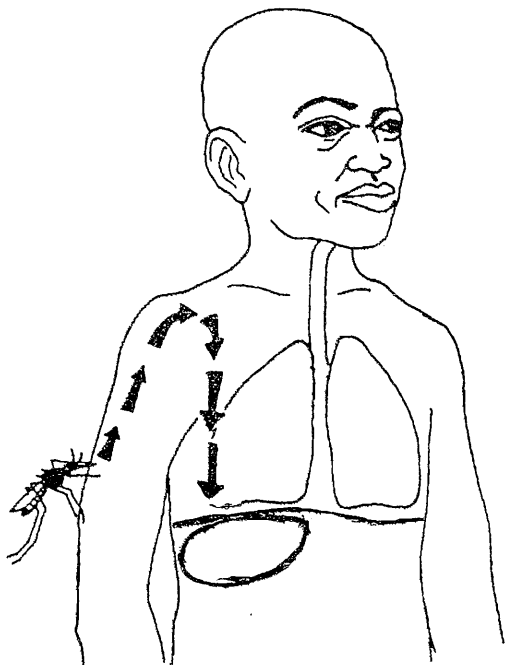
Goora halkanha n há kaann dumgee t
nmet Bamela weenn n nyañd-wu n lo há jjiimn
nmeedfi kan ree Jibthana jjiimn hii. Goora
kwifr n há kaann faali befi ta ba fi mug
Bamela.

**Dumga nyil hii há ba n faali befi wii
jjiim n san tol hii há kpañ n befi wii.**

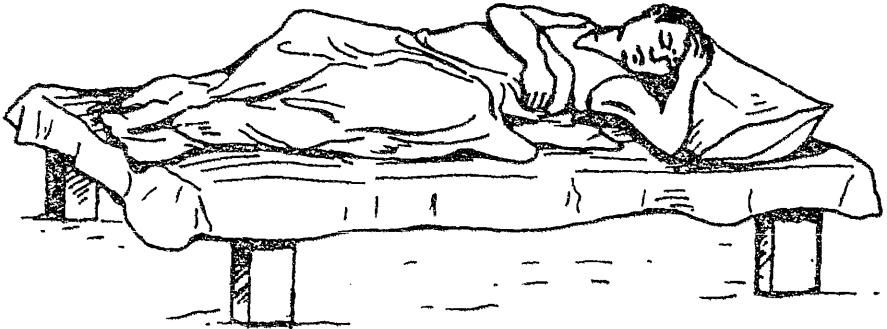


¿ Ben nnii b' ba b` gɛtg nan gwelɔa wo faali jonjonbii nn ba Bamɛla jiiɓn lee ?

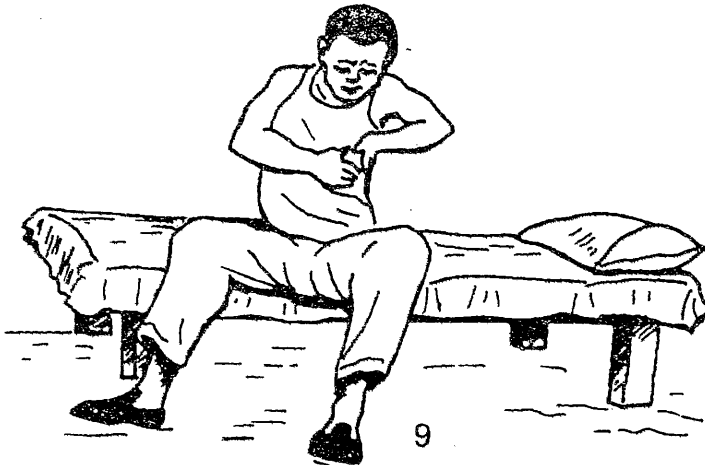
Faali nmeedhii yalg kai kpaalee na bá bee bà nyaan-fi n nɔmb. Gwentafi fi ba keliigu ka linta Bamɛla jiiɓn kakefinan n san taai fiá kwɛɛwrn. Ree nnii fin maantra fiyen fi hee-wu befi.



Hin ba fi berɔ hi kwæwrn lee, n ηmɛt n jib hi jijn n form ni yad n ηmɛt Bamela jijn n ka gilma n hi gbanu. Welee nii Bamela behi nn baɗa.



Bamela kpa mi na l' ba na hi taadm hi behi ka vool raga faali behi wen baɗaa lee wen. Tii kaa nii faali ηmeedhi nn mɔɔ forb ka nyi hi jijn. Behi tagh hodg bogm n Bamela nii kpaalaa. Hi ka ju kunyɔɔ kwegdi n jijn kpa hi namtn hi rarm t mɔɔ.



¿ Lan nnii ban miigaa fii há ban faali beshii wii ?

Hii há ban faali wii jobla na :

- Hà ban tulbermgú, naasabia hita hà fiên (welee fiêna gorefidrd laa tafird laa naard goor).
- Giidm mada-wu l` ba na há door dooruf'.
- Liilawen, há jugu wafi, há togan sofi, hà huudra herga, há noon ba totoogu.
- Bii deb loogu kpaa mad-wu.



Ka l` ba na hialafi huudr tomb mtafim goorn, hía nyuuru t haf', l` darwa-wu, hía rarmn haamii, hialafi ban befihi kpaalaa. L` ba l` bee l` bem na faali bermi laa denderk befihi.

L` ba na bá gifidg tulguu safi ka fitra hía dimt kpaalaa, ka yagaa hía fi en nyaalnigiim bà heg-wu dimgu ka vefihi-ku nyaalnigiimn. Bà log-wu bà sann n dógdaa.

¿ Taadmteb ba hóm ?

Gbaam-n dógdfihi na mig taadmteb beel hóm. Toogo kpara fiifian, liin bem ragr ban hofi na niivaakiin dii. Gwentafi ragvolfiha ta bee ka taadma faali. Wii beel fià werii-v ragbia n In ba na v` logm goorn n nan goora In gbaama fee jugu. L` ba na v` taadm befihihi kakefinan gbaadm, ka l` la fi ena-v wo v` namtn ba hóm, l` kotod na l` ba daft na v` ku jonjonbiihihi menhihi.



Toogo kɔrgun kpara hiihan niivaakiin
kpaɔ fɛna kan ŋmɛɛgb hɔm l' bafir na nidba
kɔd duuga moot ka nyi ka kpaɔ vool niivaakiin
wo ln gbaama lee. Welee kaalaihiin jonjonbii hɛ
safi faali hii, niivaakiin t miil n hin. Tii kaa nnii ln
gbaama na n` nyɔfilg nyen n dɔgdmba bɔ
werii-n lan nnii ln ba na n` fie ka faali yala-n.

¿ Niivaakiin voolb na befhii daa nan mug-v ba na bii hõmbn ?

Haa, l' kpañ hom. T' maa-n boñooob na niivaakiin jañ jañ voolb hañla faali ñmeedhi. Ka baaben tia vool niivaakiin na faali daa mug-wu l' gifda befhii taadmb gemmnt hí wen mugaa-wu. Tii kaa nnii ln gbaama nidkaalkañba n jañ na bà voolm niivaakiin ka kpañ n befhii. Bee nnii futiiba n bii n saanba.

Gbaam-n doñhii na mig fii ba naa ka ba ñà bee ñà voolm ragrii ka sol na faali befhii daa nan mug-wu. Ka l' ba na fii bee, ñà ba ñà werii-n ln gbaama na ñalañ voolm rañbia goorn hee jugu.

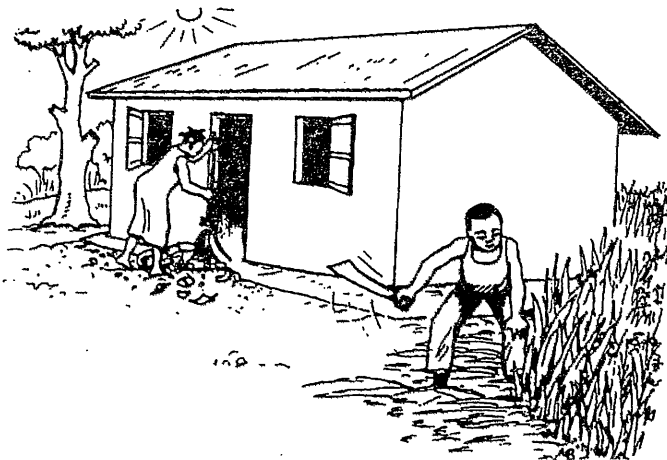


¿ Lan nii In ba na t` fie na faali daa jaarm-t ?

T` ba t` bee t` fie want kɔd hayan laa kɔrgun. Kɔtɔd na l` kpañ na n` taadm faali n raga n jafi'. Wo gwelga tn miig dumga neerm n lan nii faali nn tola lee, tn saa n` miibn In ba na t` fiem bii.

L` ba na t` vo dumii t` kɔrgu.

- L` ba na t` moogm t` haya maaru na l` sahm-t wiinga fiem hɔm jiba t` duunin.
- L` ba na t` fɔɔm moot t` haya maaru na dumii daa fohntm kan, ka ta fɔɔ moot t` nyɔhr n nyaaltagt kan ba ree na dumii daa bee hí fohntm.



***L` ba na t` he na dumii daa nyofim hí kwolea
t` korgun.***

- L` ba na t` hõgm logt hien n nyaalm dafot
hien mefi'.



- L` ba na t` kugm haya maaru n vatn gaanbɛht, fiakpankpeemt, fiayabvaat n nan kpalbsaat. Welee wantii nn hugla n nyaalm lee, dumii t wai welee n nyofim hí koolea.



- L` ba na t` waaliim vat t` hugl n toju nyaalm tii.



- L` ba na t` gifiim nyaalkogian holií hí ju ngmingminii hii.

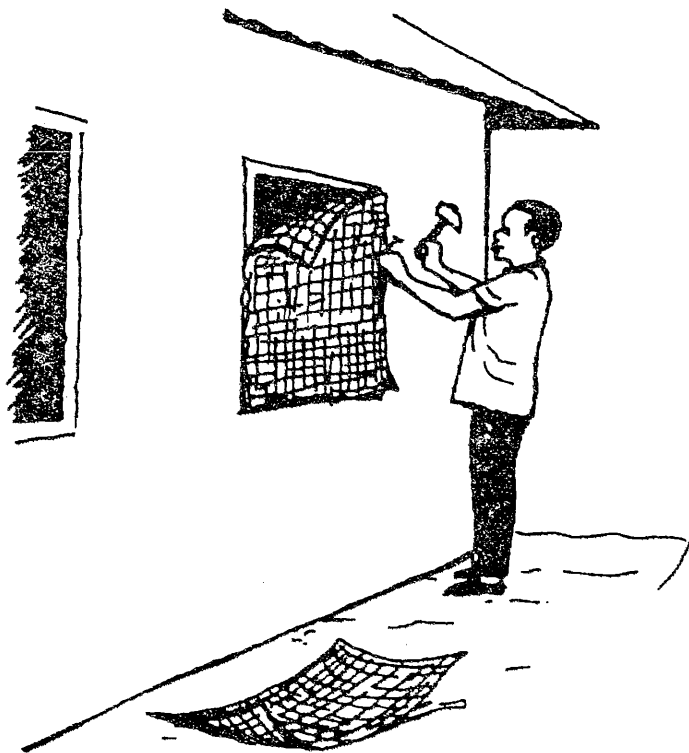


L` ba na t` fie na dumii daa jibm t` duunin.

- L` ba na t` totrm tifeent vaat n huru moot jabr fien haaga.

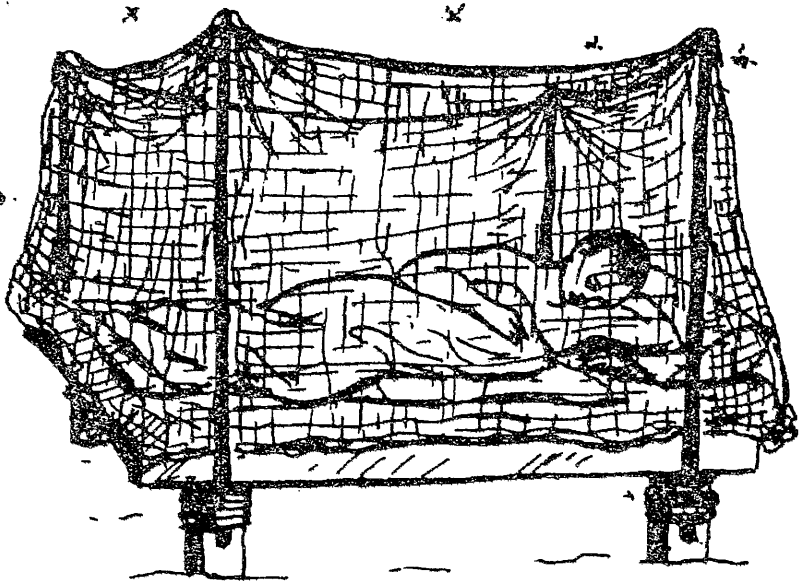


- L` ba na t` ləcm muna təntəla n duuni noon.



N` ba n` bee n` fie na dumii daa nyahm-n.

- Ka heгаа n` fiен n bii fiен dimt jabr fiен.
- Ka ta go mund kwєєn bá veñ-d ragrn. L` gbaama welee na kunidbii n kaaba goom muna kwєєn na duumii daa nyahm-hi na hí gbani kpaа hafr n beñii. Dumii ta nyahl-hi ka yala nidbermba na hí gbani ba tєñ tєñ. Futiiba meñ ta ba na bá goom mund kwєєn l` bafrn buga ká ba bá raawtn kee. Beñii taadmb ba daft ka yata ln ba na v` fie na hì daa mug-v lee.



Êee-n gemm n` vo dumii n` kərgu !

Imprimé par AFASA, Kara
No. d'impression : **70**.....

1ère édition
No. d'exemplaires : 500
Dépôt légal : 1er trimestre 2004

Prix de vente : 100 cfa